



133 Mills Terrace North Adelaide SA

5 🏠 3 🚗 3 🚗

Magnificent late-19th century mansion with ten main rooms.

This superb property offers so much, sited on over 1000 sqm (approx) with ceiling heights reaching over 3.5m (approx), and a flexible floor plan of five to six bedrooms.

Take up the opportunity to restore it to its rightful grandeur or develop it as a generous home to incorporate two generations or extended family.

There are many period features such as polished wooden floors, numerous large fireplaces, gracious archways with original plaster mouldings, a round bay window with seating, and filigree fretwork. Even the chimneys are a masterpiece of decorative brickwork.

View : <https://www.martinrealestate.com.au/sale/sa/adelaide/north-adelaide/residential/house/5886791>



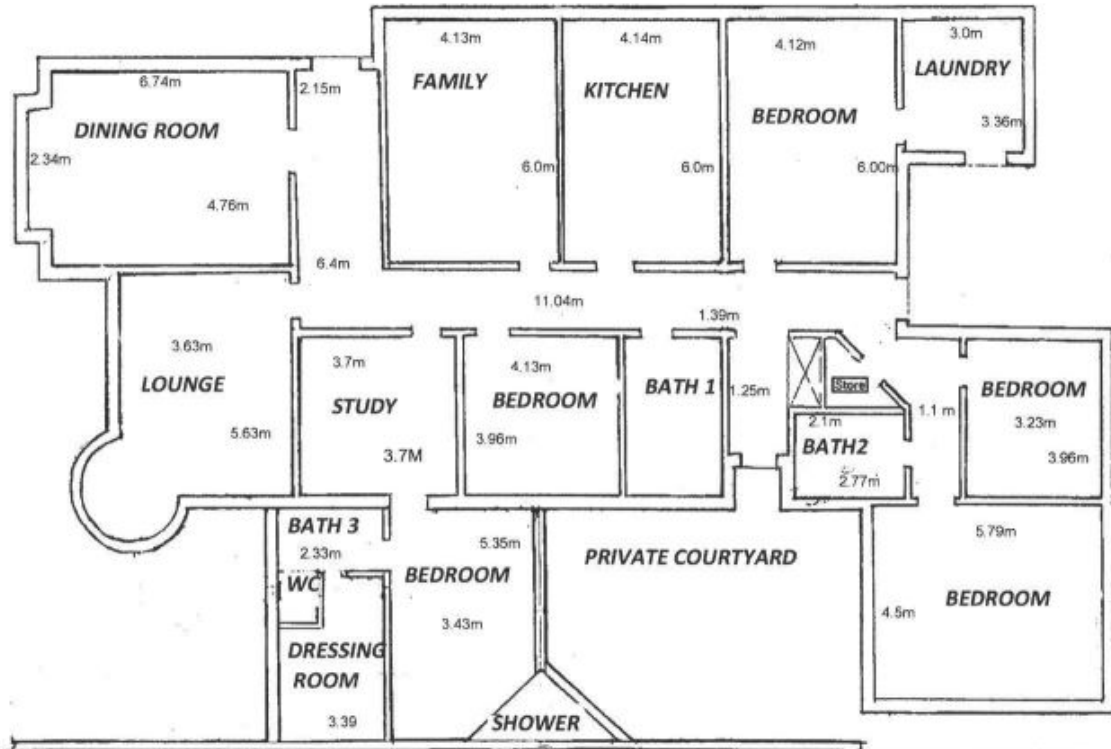
Brian Morgan
08 8361 7111



Ann Preston Flint
08 8361 7111

North to Mills Terrace and Park Lands opposite No 2 Golf Course North Adelaide - 3 car garage at the front of the house

Ceiling Height 3.54 M



This drawing is for illustration purposes only. All measurements are approximate and details intended to be relied upon should be independently verified