



68-70 Belair Road Hawthorn SA

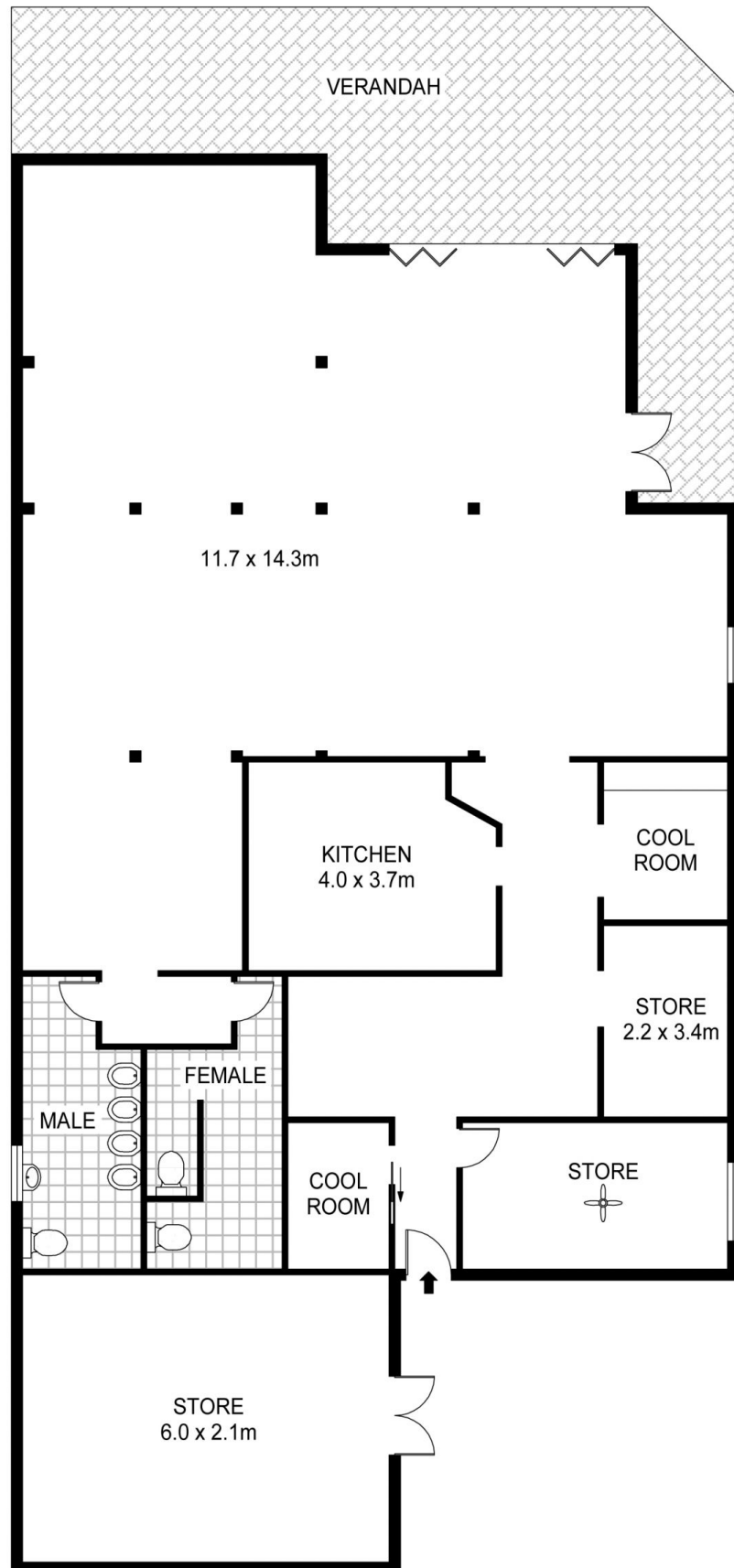
- * Ideal Restaurant
- * Ideal Office
- * Great exposure, Partly fitted
- * Kitchen Appliances
- * Commercial Fridge
- * 167 sqm (approx) Dining Room
- * Full verandah - Alfresco Dining
- * Male and Female WC

Building Size : 233 sqm
Land Size : 929 sqm
View : <https://www.martinrealestate.com.au/sale/sa/eastern-suburbs/hawthorn/commercial/development/6004535>



Colin Martin
08 8361 7111

THIS IS A OPPORTUNITY OF A LIFETIME!!



0 1 2 3 4 5

Scale in metres. Indicative only. Dimensions are approximate. All information contained herein is gathered from sources we believe to be reliable. However we cannot guarantee its accuracy and interested persons should rely on their own enquiries

Area	M ²
Living	259
Verandah	52
Total	311

68-70 Belair Road, Hawthorn