



6/3 Hermitage Place Wynn Vale SA

2  1  1 

Such a quiet location, safe and secure at an affordable price.

Close to all important facilities, Tea Tree Plaza, transport, shops and restaurants.

An ideal environment to enjoy a stroll around the beautiful neighbourhood.

Fabulous size lounge, 2 spacious bedrooms with robes, garage UMR

YOU WILL LOVE IT!!

SA Water: \$140.55/quarter approx
Council Rate: \$1,236/annum approx
Strata Fee: \$503.40/quarter approx

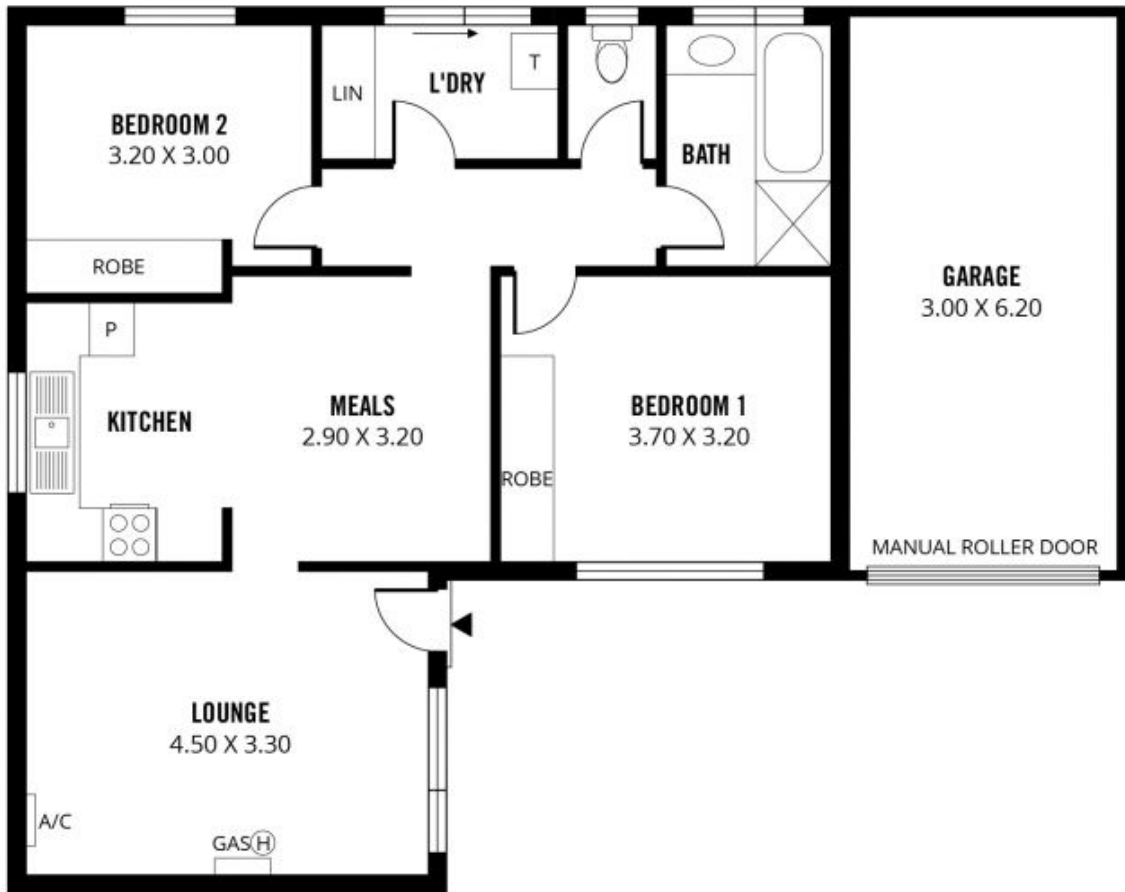
View : <https://www.martinrealestate.com.au/sale/sa/north-north-east-suburbs/wynn-vale/residential/unit/6049580>



Colin Martin
08 8361 7111



Brian Morgan
08 8361 7111



97m²

TOTAL

77m²

Living

20m²

Garage

Scale in metres. This drawing is for illustration purposes only. All measurements are approximate and details intended to be relied upon should be independently verified. Produced by **The Fotobase Group**