

17 Clifton Street Prospect SA

3 1 4

This property has been partially modernised but awaits the final touches to bring it up to its best. It offers a flexible floor plan with four generous main rooms at the front of the house, all boasting ceiling heights of 3.65 metres.

A lot of the original features have been retained - ceiling roses, Baltic pine floors, and decorative fireplaces, of which two have been converted to instant gas. The hallway has the original moulded archway with keystone.

There is ducted reverse cycle air conditioning throughout, as well as a ceiling fan in one of the bedrooms.

For added security, the windows have security screens and/or aluminium roller shutters, as well as a security door to the rear.

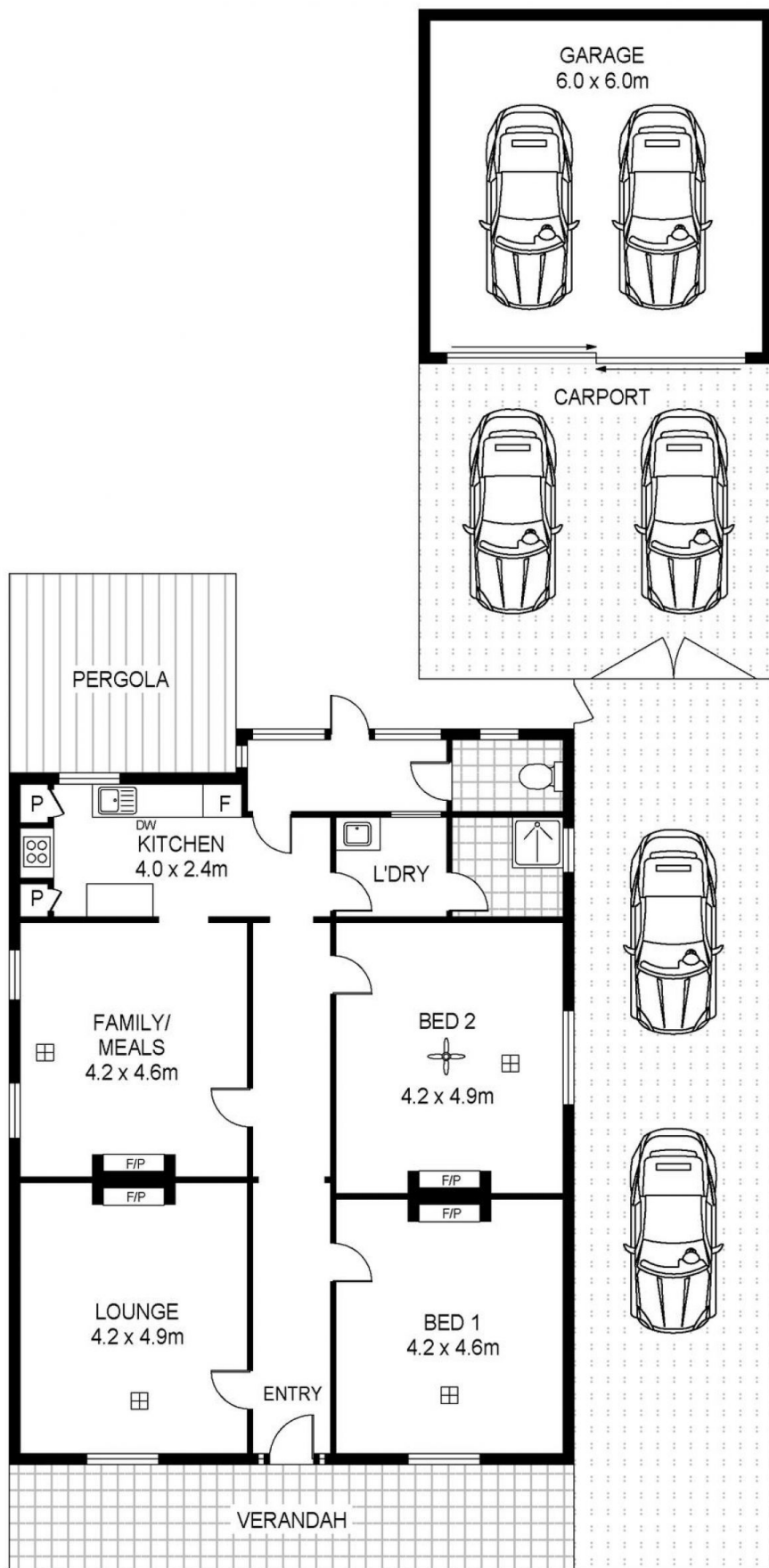
Building Size : 140 sqm
Land Size : 535 sqm
View : <https://www.martinrealestate.com.au/sale/sa/north-north-east-suburbs/prospect/residential/house/6504193>



Colin Martin
08 8361 7111



Brian Morgan
08 8361 7111



Scale in metres. Indicative only. Dimensions are approximate. All information contained herein is gathered from sources we believe to be reliable. However we cannot guarantee its accuracy and interested persons should rely on their own enquiries

INT : 129m²
GARAGE : 36m²
EXT : 132m²

17 Clifton Street, Prospect