



5/2A Thistle Avenue Klemzig SA

3 1 3

Immaculate 3 bedroom Villa, freshly decorated and neutral presentation.

Fabulous floor plan, large lounge plus spacious kitchen, meals and dining.

Reverse cycle air conditioning and built ins.

Great location to transport, schools, CBD only minutes away.

Ideal first home or investment - fabulous retirement location

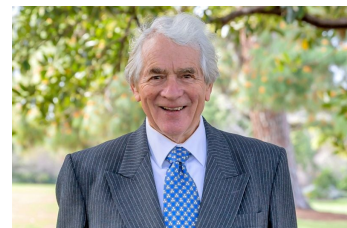
This will sell fast!!

Council Rate: \$289 per quarter approx

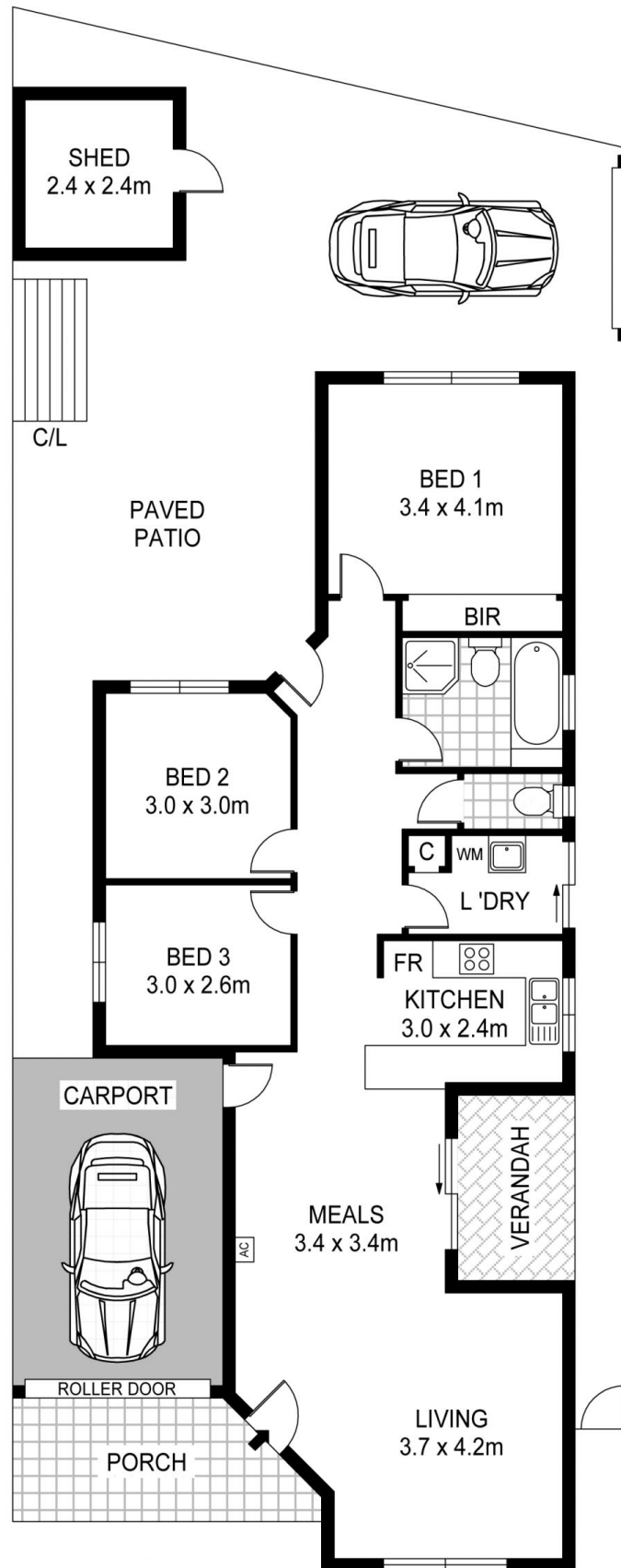
Building Size : 111 sqm
Land Size : 295 sqm
View : <https://www.martinrealestate.com.au/sale/sa/north-north-east-suburbs/klemzig/residential/unit/6780033>



Colin Martin
08 8361 7111



Brian Morgan
08 8361 7111



Scale in metres. Indicative only. Dimensions are approximate. All information contained herein is gathered from sources we believe to be reliable. However we cannot guarantee its accuracy and interested persons should rely on their own enquiries

5/2A Thistle Avenue, Klemzig