



38 Lindner Avenue Ashton SA

4 🏠 2 🚗 3 🚗

Open your eyes and heart because 38 Lindner Avenue Ashton is the location and home you have always dreamed about.

Driving up to the property is the stunning Lindner Avenue tree lined street.

As you enter the front gate you start the journey.

Long winding driveway past the orchard, the horseshoe driveway wraps around the home, extensive landscaped gardens give a feel that you are in the Botanical Gardens.

Arrive at the front of the home and your dream unfolds connecting a quaint touch of the past in architecture and with all life's modern desires.

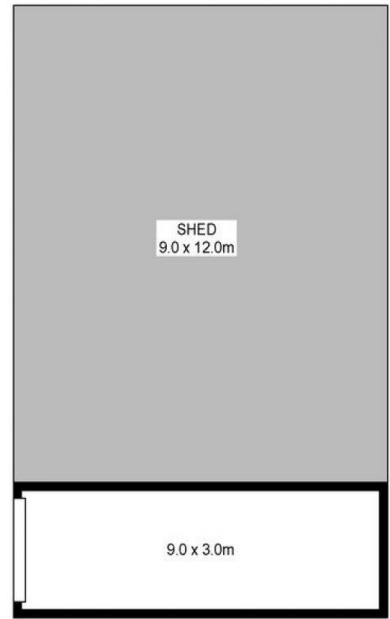
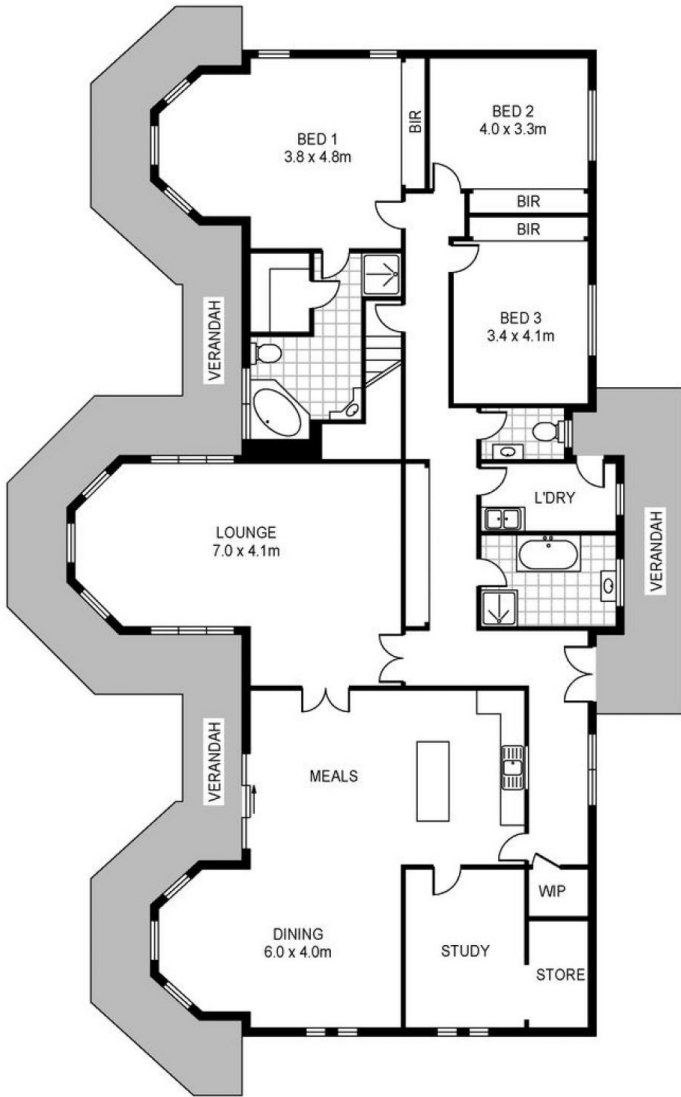
The front porch alfresco area is the place you will enjoy the quiet red wine or port at the end of the day OR go back down into the cellar to retrieve another bottle.

Inside the home, it's open, bright and welcoming, 3 spacious bedrooms, study and master bedroom with

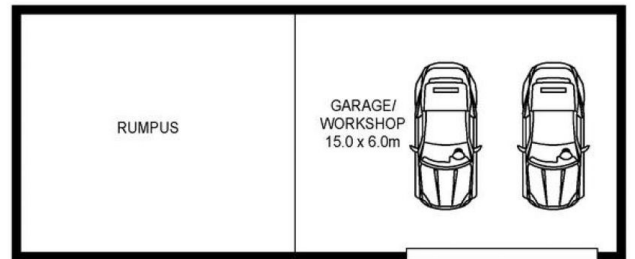
Building Size : 315 sqm
Land Size : 5.365 ha
View : <https://www.martinrealestate.com.au/sale/sa/adelaide-hills/ashton/residential/home/6817106>



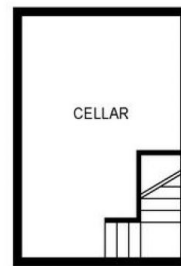
Colin Martin
08 8361 7111



NOT IN ACTUAL POSITION



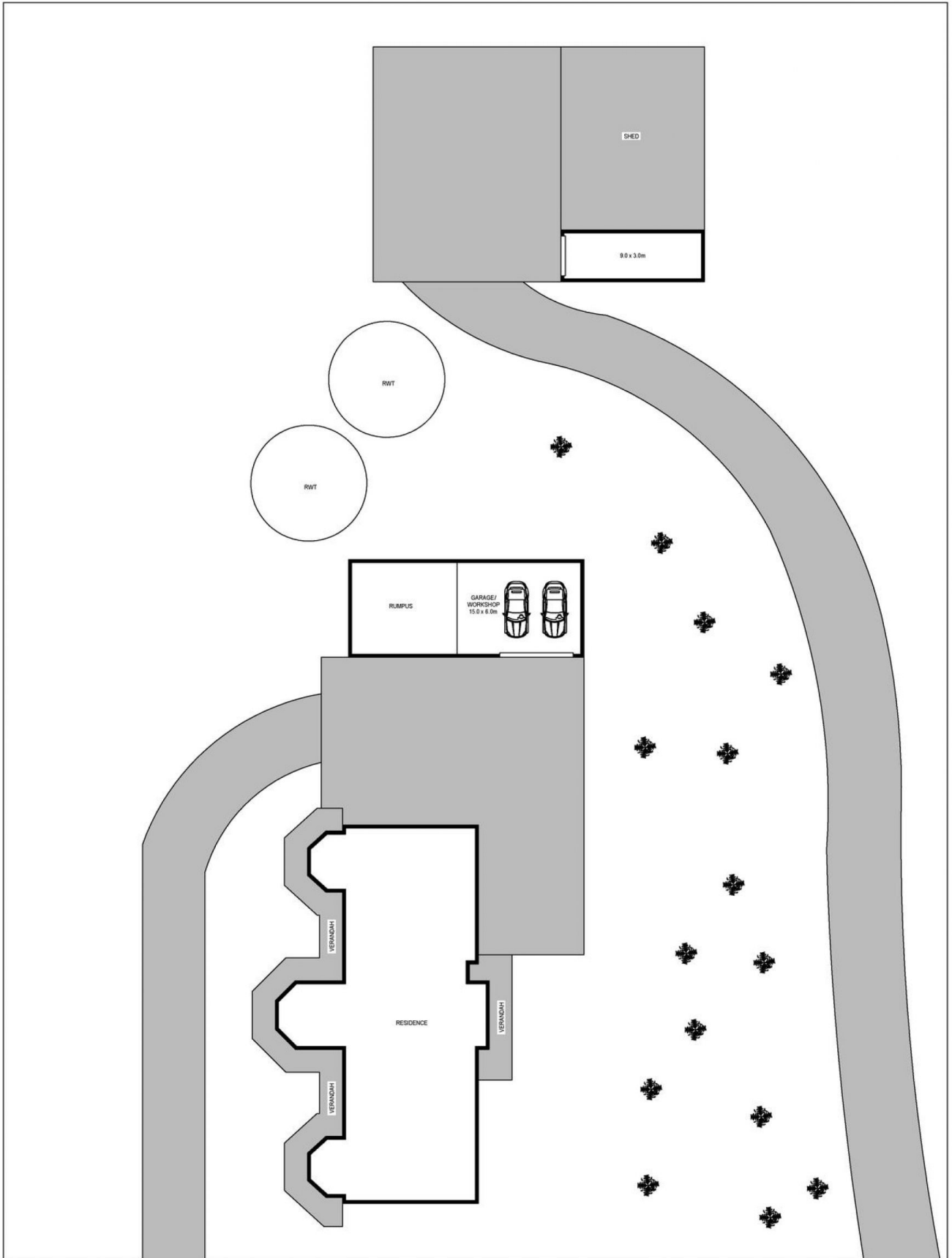
NOT IN ACTUAL POSITION



Scale in metres. Indicative only. Dimensions are approximate. All information contained herein is gathered from sources we believe to be reliable. However we cannot guarantee its accuracy and interested persons should rely on their own enquiries

Area	M ²
Living	240
Garage	90

38 Lindner Avenue, Ashton



Scale in metres. Indicative only. Dimensions are approximate. All information contained herein is gathered from sources we believe to be reliable. However we cannot guarantee its accuracy and interested persons should rely on their own enquiries

Area	M ²
Living	240
Garage	90

38 Lindner Avenue, Ashton