

24 Halbury Road Salisbury SA

3 1 4

We are honoured and proud to offer this stunning home set in what is considered one of the best suburbs in north of Adelaide, close to the Para River and Linear Park.

The home is positioned overlooking the Reserve, it offers 3 bedrooms, W.I. Robes, 2 way bathroom, huge formal lounge/dining, galley kitchen overlooks the family meals area with sliding doors to alfresco verandah.

Double garage giving room for 4 cars plus space for the boat and caravan with side access on a huge corner block.

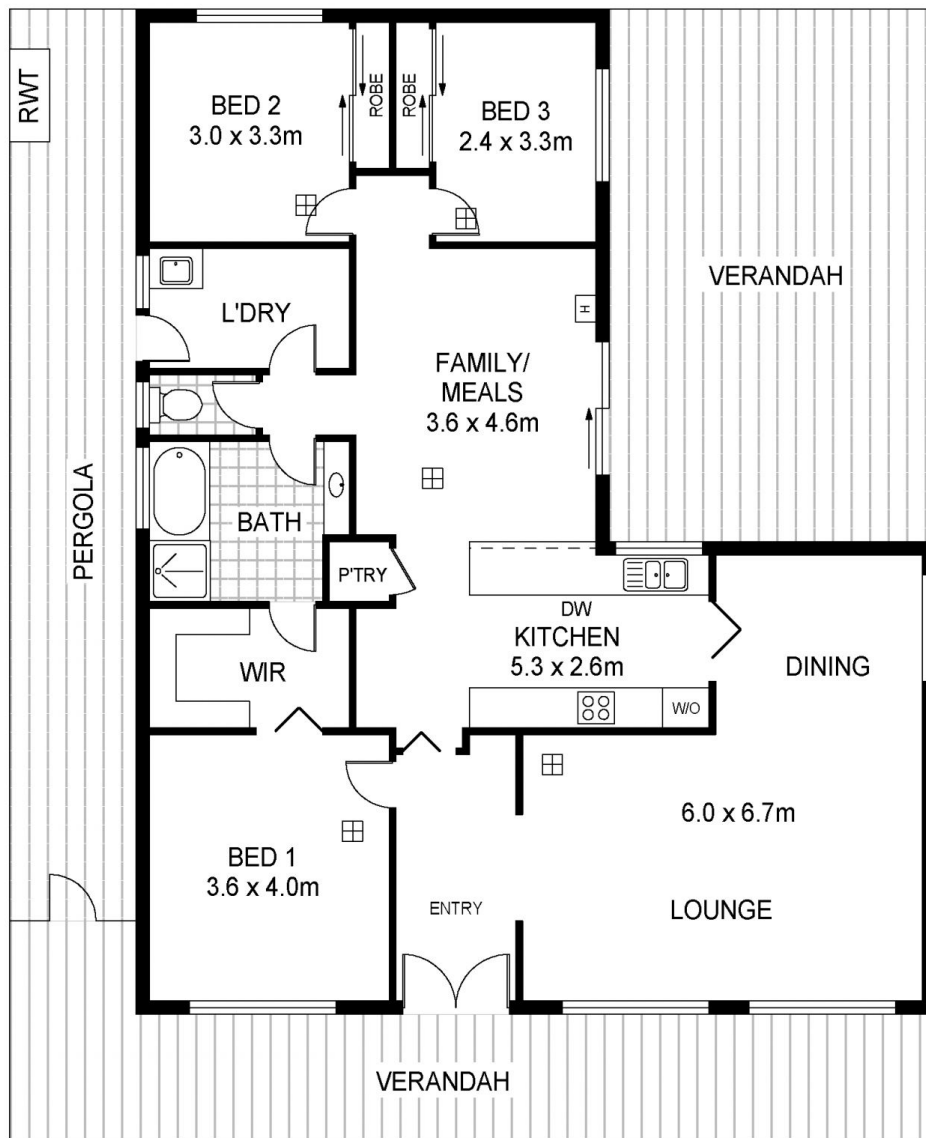
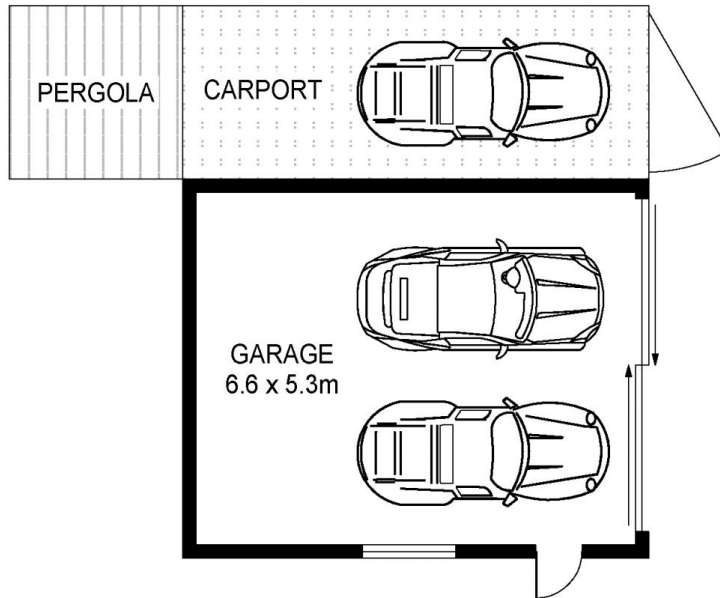
The home is well established with landscaped gardens wrapping around the home.

Location is a walking distance to Parabanks and John Street, Salisbury.

Building Size : 152 sqm
Land Size : 760 sqm
View : <https://www.martinrealestate.com.au/sale/sa/north-north-east-suburbs/salisbury/residential/house/7041913>



Colin Martin
08 8361 7111



Scale in metres. Indicative only. Dimensions are approximate. All information contained herein is gathered from sources we believe to be reliable. However we cannot guarantee its accuracy and interested persons should rely on their own enquiries

INT : 135m²
GARAGE : 36m²
EXT : 119m²

24 Halbury Road, Salisbury