



18-58 Beadell Street Burton SA

5 🏠 2 🚗 70 🚗

This rare opportunity offering a stunning architecturally solid brick family home built with pride and no expense spared.

5 bedrooms, huge formal lounge, formal dining, open plan living that rolls out to a stunning tropical garden and currently rented \$510 per week

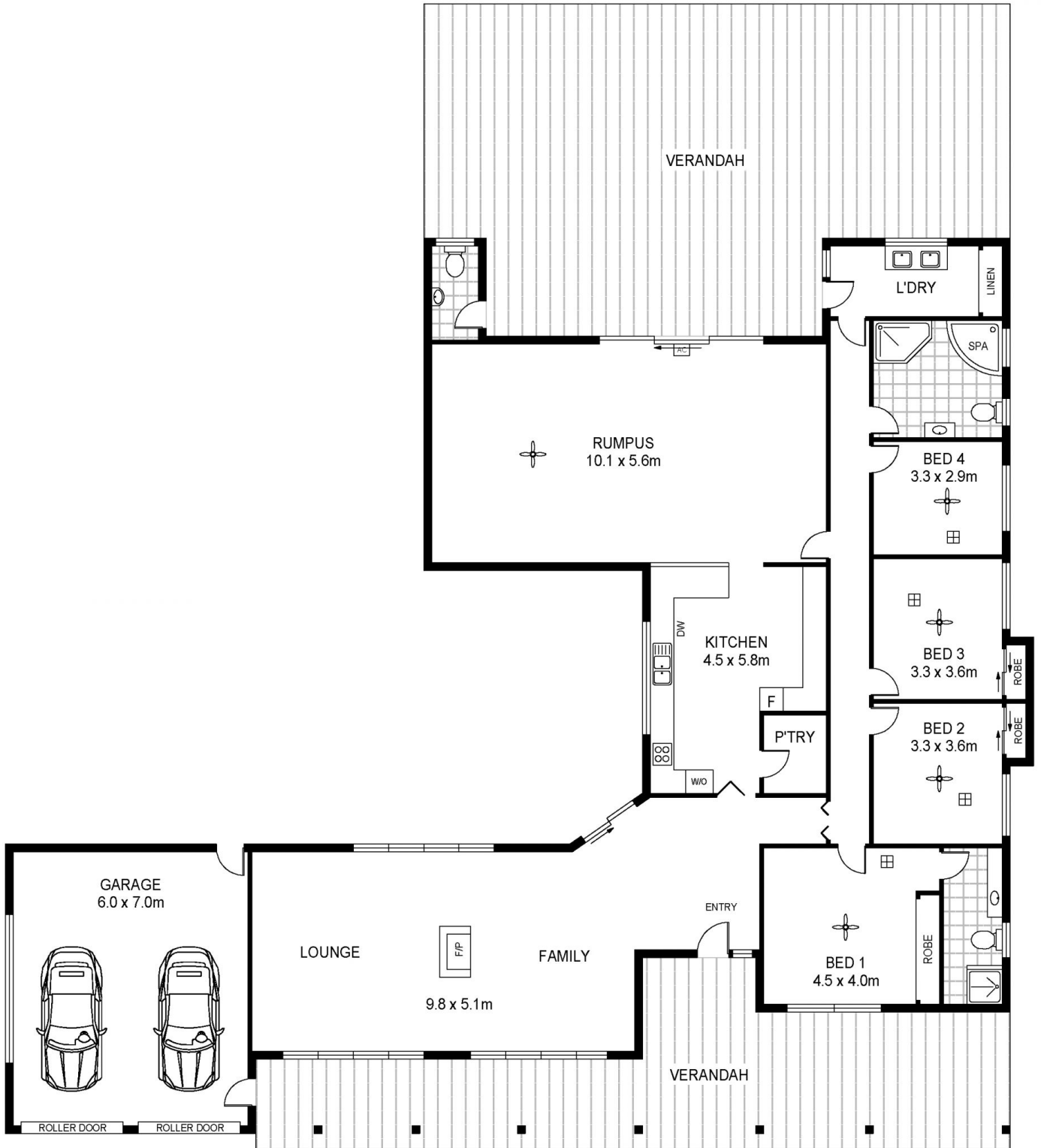
The second home is stunning and is an ideal income earner (currently \$300 per week) or ideal as a flat with 2 bedrooms, open living and private gardens.

Land for all of the above is set on 4.956 HA or 12.24 acres (approx) of prime land ripe for development or continuing a horticultural use with plenty of bore water for reticulation plus packing shed and cool rooms plus workshop.

Price : Contact Agent
Building Size : 267 sqm
Land Size : 4.956 ha
View : <https://www.martinrealestate.com.au/sale/sa/north-north-east-suburbs/burton/residential/rural/7292492>



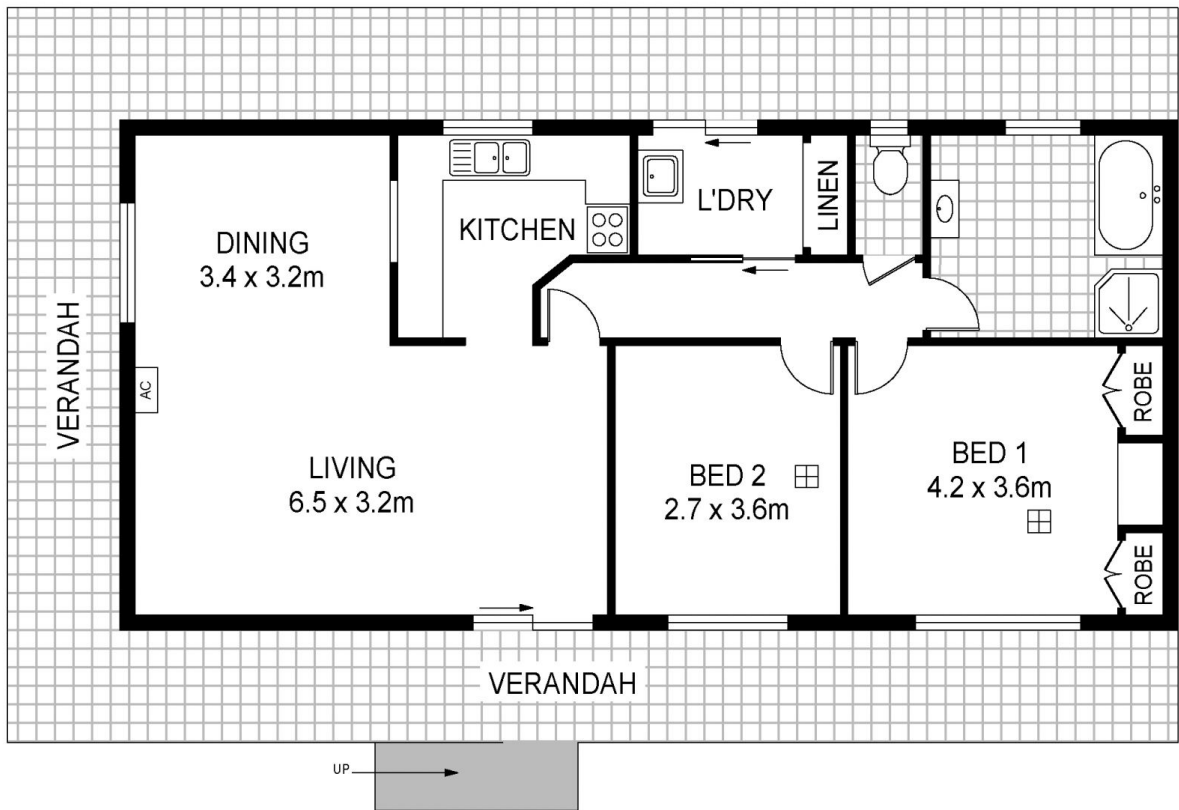
Colin Martin
08 8361 7111



Scale in metres. Indicative only. Dimensions are approximate. All information contained herein is gathered from sources we believe to be reliable. However we cannot guarantee its accuracy and interested persons should rely on their own enquiries

INT : 248m²
 GARAGE : 22m²

20 Beadell Street, Burton



Scale in metres. Indicative only. Dimensions are approximate. All information contained herein is gathered from sources we believe to be reliable. However we cannot guarantee its accuracy and interested persons should rely on their own enquiries

INT : 87m²

22 Beadell Street, Burton