



**205/61-69 Brougham Place North Adelaide SA**

2 2 2

Stunning 2 bedroom apartment with a northerly aspect and north east facing balcony situated in an ideal location within metres to O'Connell Street.

-Stroll to the Adelaide CBD, Adelaide Oval, Parklands and so much more!

-Large open plan kitchen/dining/lounge with floor to ceiling glass sliding doors opening to north facing balcony with plenty of space for entertaining.

-Two spacious bedrooms, both with built-in robes, main with balcony access and ensuite.

-Fully equipped modern kitchen with stainless steel cooking appliances and plenty of bench and cupboard space

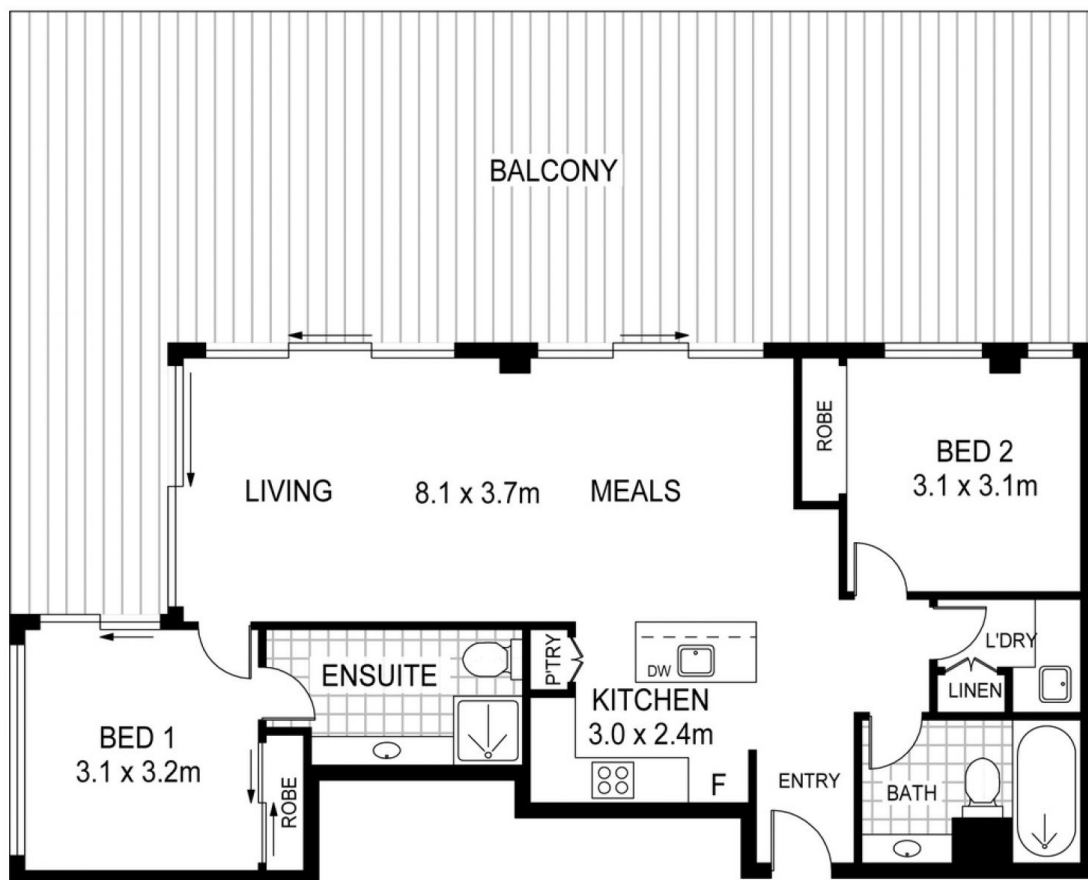
-Light filled with neutral decor throughout

**Building Size** : 157 sqm

**View** : <https://www.martinrealestate.com.au/lease/sa/adelaide/north-adelaide/residential/apartment/7372874>



**Colin Martin**  
08 8361 7111



Scale in metres. Indicative only. Dimensions are approximate. All information contained herein is gathered from sources we believe to be reliable. However we cannot guarantee its accuracy and interested persons should rely on their own enquiries

INT : 85m<sup>2</sup>  
EXT : 72m<sup>2</sup>

205/62 Brougham Place, North Adelaide