



### 267-271 North East Road Hampstead Gardens SA

Located on the corner of North East Road, O.G. Road and Poole Avenue.

Easy access, front and rear entry, practical one level floor plan, retail window space, office and large show room or supermarket floor space.

Would suit most retail businesses.

Location - Location - Location

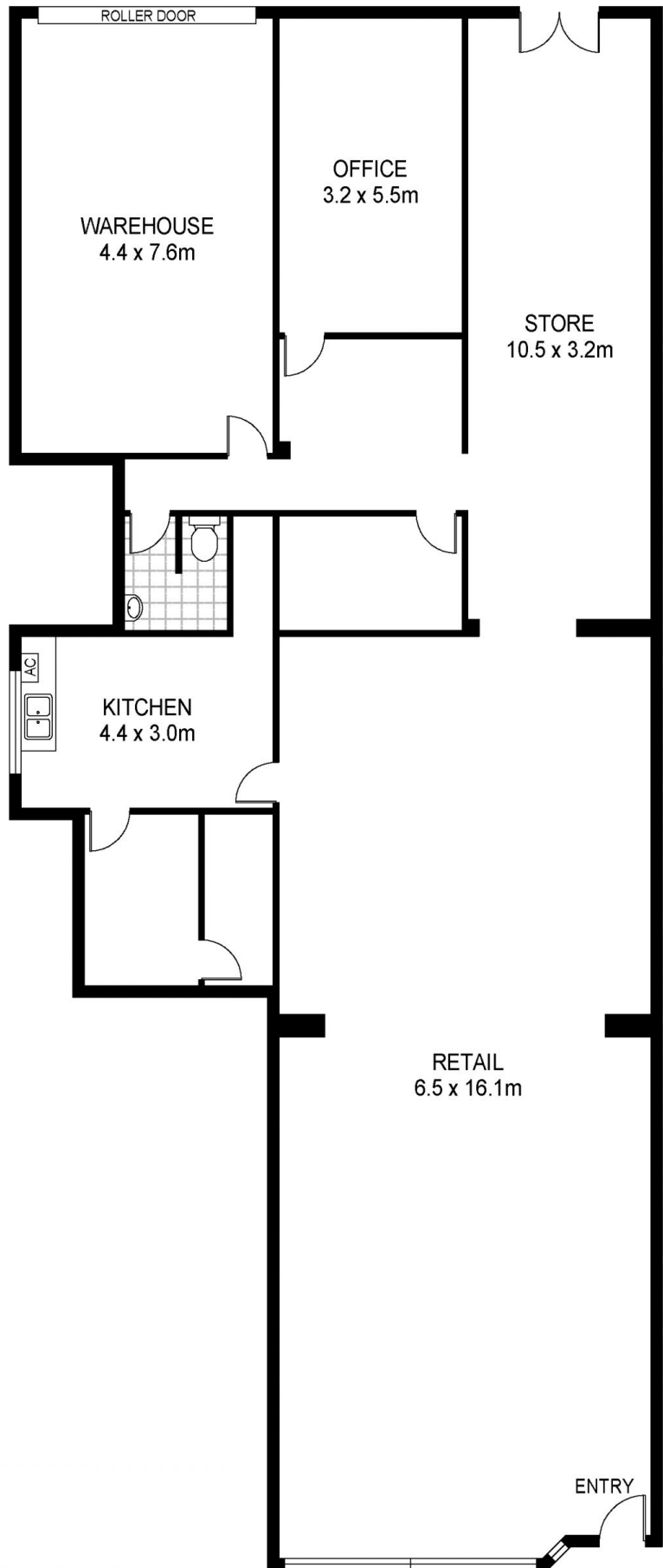
Call COLIN MARTIN 0412 822 166  
RLA255581

**Price** : \$65,000 pa ex GST

**View** : <https://www.martinrealestate.com.au/lease/sa/north-north-east-suburbs/hampstead-gardens/commercial/retail/7443323>



**Colin Martin**  
08 8361 7111



Scale in metres. Indicative only. Dimensions are approximate. All information contained herein is gathered from sources we believe to be reliable. However we cannot guarantee its accuracy and interested persons should rely on their own enquiries

INT : 244m<sup>2</sup>

267-271 North East Road, Hampstead Gardens