



**21 Nixon Street Buckland Park SA**

4 🚗 2 🚗 2 🚗

Scott Salisbury Bradford built Display at Nixon Street, Riverlea Park.

Benefits of owning a Display Home:

Lease Back commence from the date of settlement for 12 months, with options by Scott Salisbury Home Group to renew the lease for 4 additional periods of 6 months as required by Scott Salisbury Homes.

Reduce your income tax by utilising capital allowance and tax depreciation schedule

NO bond or property management fees

NO maintenance payments

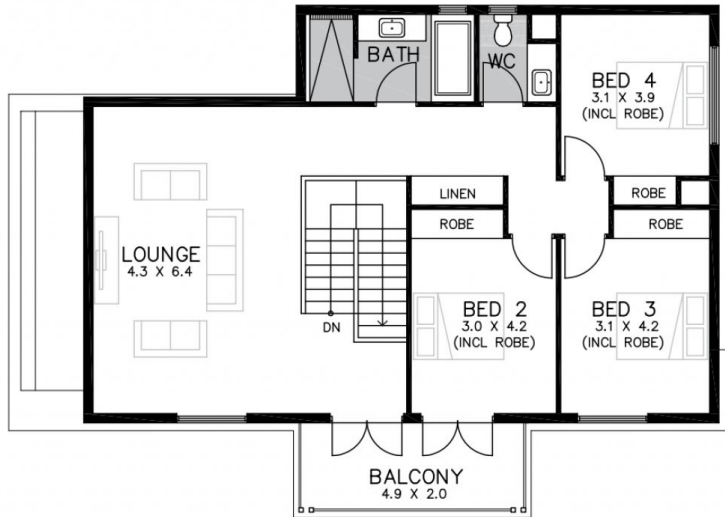
**Price** : Contact Agent  
**Building Size** : 326 sqm  
**Land Size** : 540 sqm  
**View** : <https://www.martinrealestate.com.au/sale/sa/north-north-east-suburbs/buckland-park/residential/house/7503750>



**Colin Martin**  
08 8361 7111

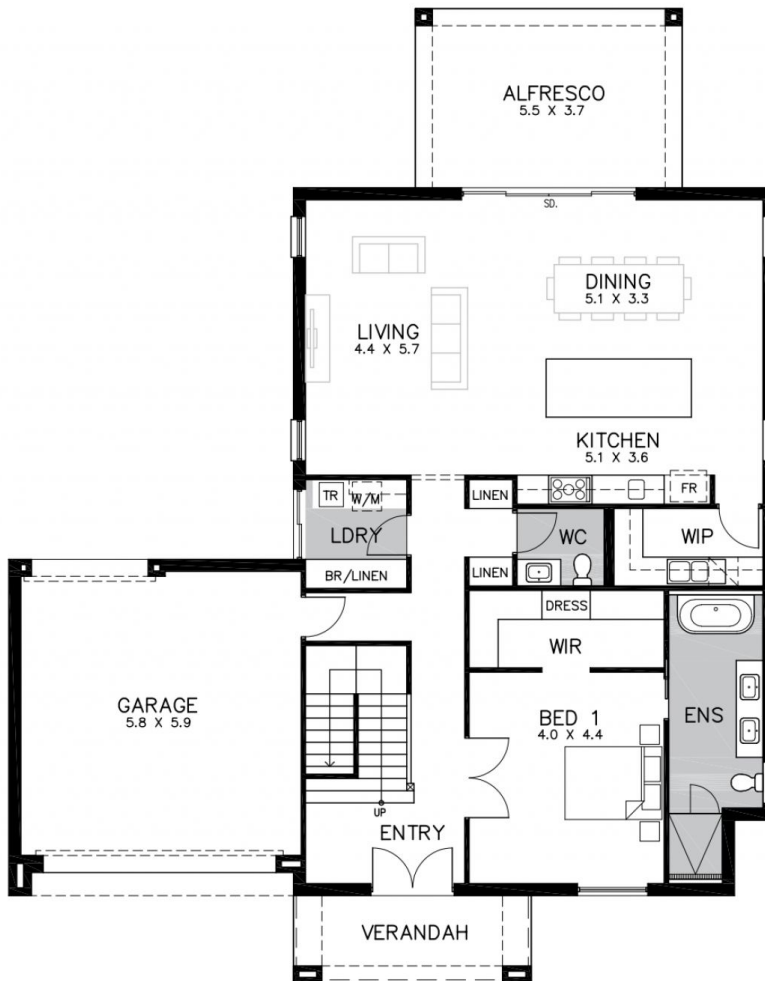


**Ann Preston Flint**  
08 8361 7111



AREAS	m2
LOWER LIVING	: 143.26
UPPER LIVING	: 104.88
GARAGE	: 39.26
ALFRESCO	: 20.39
VERANDAH	: 8.84
BALCONY	: 9.62
<b>TOTAL</b>	<b>: 326.25</b>
WIDTH	: 15.83
DEPTH	: 20.13
BLOCK WIDTH	: 18.00

UPPER FLOOR



GROUND FLOOR

