



5 Tiffany Court Ingle Farm SA

3  2  2 

With fresh décor, this beautiful 3 bedroom home has open plan living, ensuite, mirrored robes and an outdoor alfresco area.

Neutral decor throughout, set in a quiet street makes this the perfect choice for your next home!

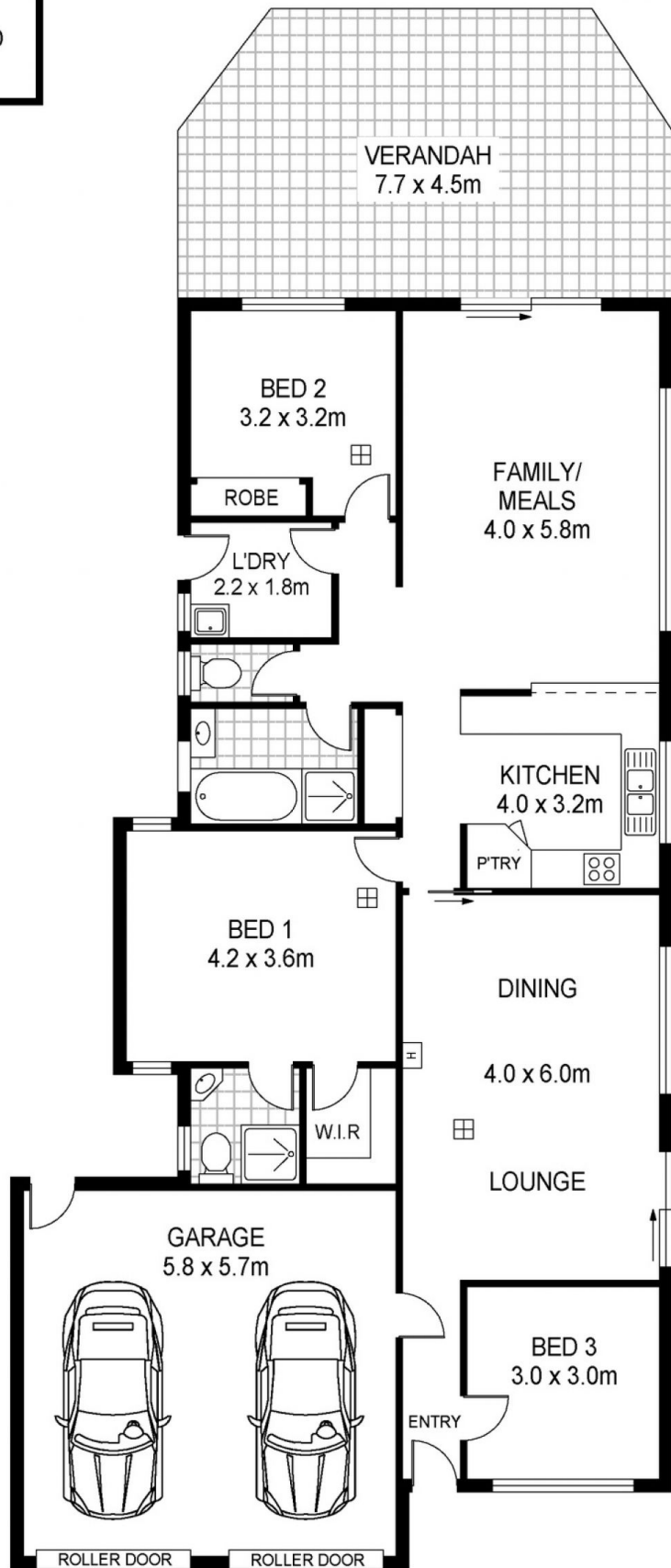
Call COLIN MARTIN 0412 822 166
RLA255581

Building Size : 150 sqm
Land Size : 417 sqm
View : <https://www.martinrealestate.com.au/sale/sa/north-north-east-suburbs/ingle-farm/residential/house/7687446>



Colin Martin
08 8361 7111

SHED



Scale in metres. Indicative only. Dimensions are approximate. All information contained herein is gathered from sources we believe to be reliable. However we cannot guarantee its accuracy and interested persons should rely on their own enquiries

INT : 122m²
GARAGE : 33m²

5 Tiffany Court, Ingle Farm