



25/1 Brenda Park Shack Road Brenda Park SA

5 2 4

Wide expanses of glass, looking out over the River Murray and the grass embankment. There is a fixed 'Modwood' timber deck at the edge of the river for mooring or fishing, with an access ladder for keen swimmers.

The house is light, bright and airy with generous outdoor and indoor entertaining spaces.

The three bedrooms on the upper level are all double-sized and well-served with a large family bathroom.

Downstairs there is a fourth bedroom with an adjacent bathroom, plus a huge teenage retreat with a living area and kitchenette.

Undercover storage areas are ample and generous and include a ski shed, a boat and caravan shed and undercover parking for up to four cars.

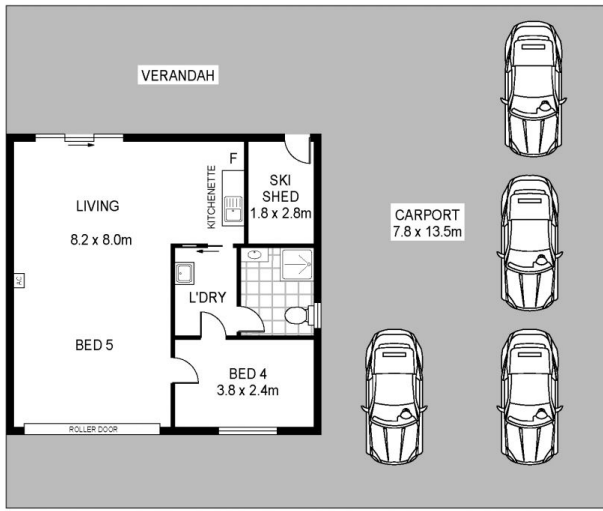
Price : UNDER CONTRACT

View : <https://www.martinrealestate.com.au/sale/sa/riverland/brenda-park/residential/house/7924002>

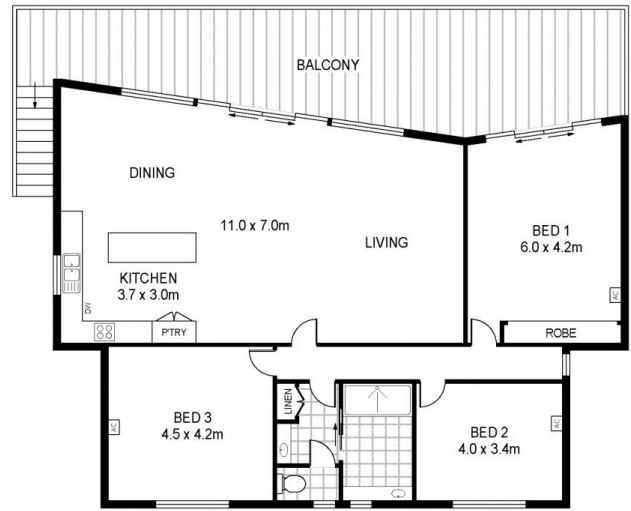


Colin Martin
08 8361 7111

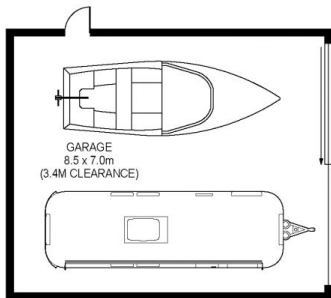
Call COLIN MARTIN 0412 822 166
RLA255581



LOWER LEVEL



UPPER LEVEL



Scale in metres. Indicative only. Dimensions are approximate. All information contained herein is gathered from sources we believe to be reliable. However we cannot guarantee its accuracy and interested persons should rely on their own enquiries

INT : 210m²

25 Brenda Park Shack Road, Brenda Park