



20A Brougham Place North Adelaide SA

3  1  1 

Expansive views of the Adelaide Hills, and the CBD from the upstairs balcony.

Three bedrooms, large family bathroom, second toilet, separate laundry.

Private and secure, freshly painted and with new carpet, this is ready to move into.

Easy access to transport, local shopping at the North Adelaide Village and renowned restaurants the length of nearby O'Connell Street.

Only ten minutes walk from the Adelaide Oval, the Festival Theatre, the Adelaide Zoo, the university campuses.

The perfect place to live!

Strata: \$1,350 per quarter approx

Council Rate: \$519.30 per quarter approx

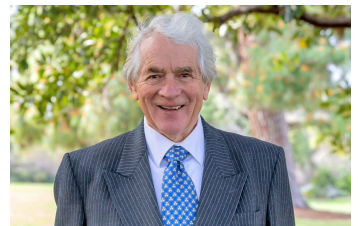
SA Water : \$215.42 approx plus usage

Building Size : 152 sqm

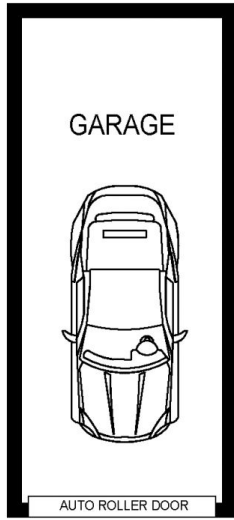
View : <https://www.martinrealestate.com.au/sale/sa/adelaide/north-adelaide/residential/townhouse/7925606>



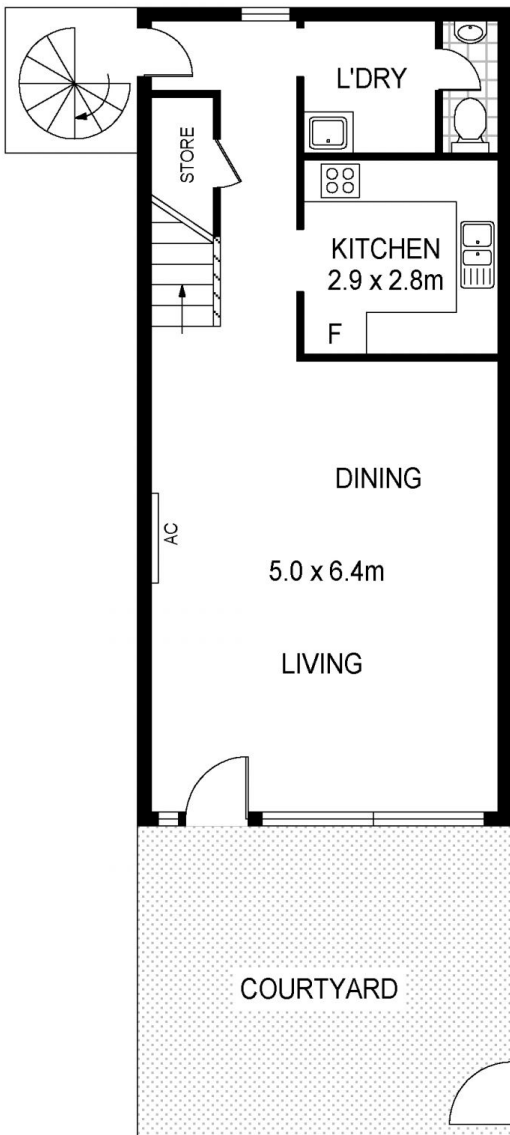
Ann Preston Flint
08 8361 7111



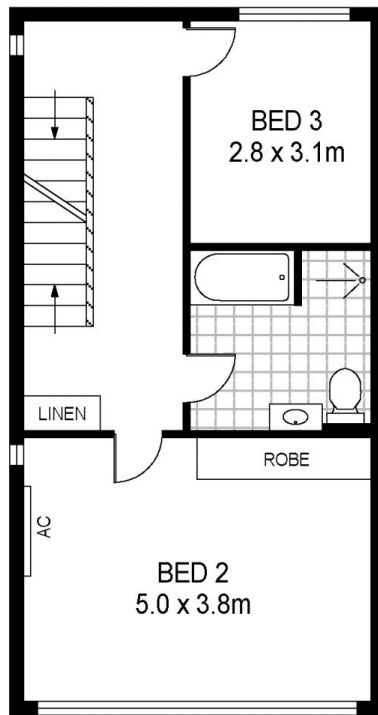
Brian Morgan
08 8361 7111



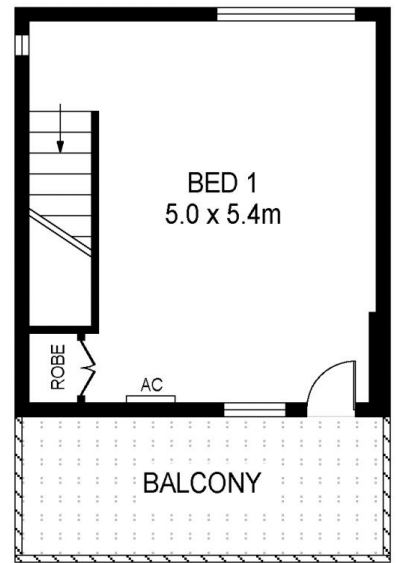
NOT IN ACTUAL LOCATION



GROUND LEVEL



FIRST LEVEL



SECOND LEVEL



Scale in metres. Indicative only. Dimensions are approximate. All information contained herein is gathered from sources we believe to be reliable. However we cannot guarantee its accuracy and interested persons should rely on their own enquiries

INT : 142m²

20A Brougham Place, North Adelaide