




## 15 Oradala Court Greenwith SA

4  2  6 

An entertainer's home surrounded by a large garden oasis set at the end of the Court with a commanding outlook over the immaculate gardens.

Situated on almost one acre, this well-designed family home, built in 1990, has 4 bedrooms, 2 bathrooms, 3 living rooms and a home office.

It features raised ceilings, an updated kitchen with Miele appliances installed in 2008, a reverse cycle air conditioner updated in 2016 and garage parking for 3 cars; 4.9kW Solar Power System, it's just quality and class.

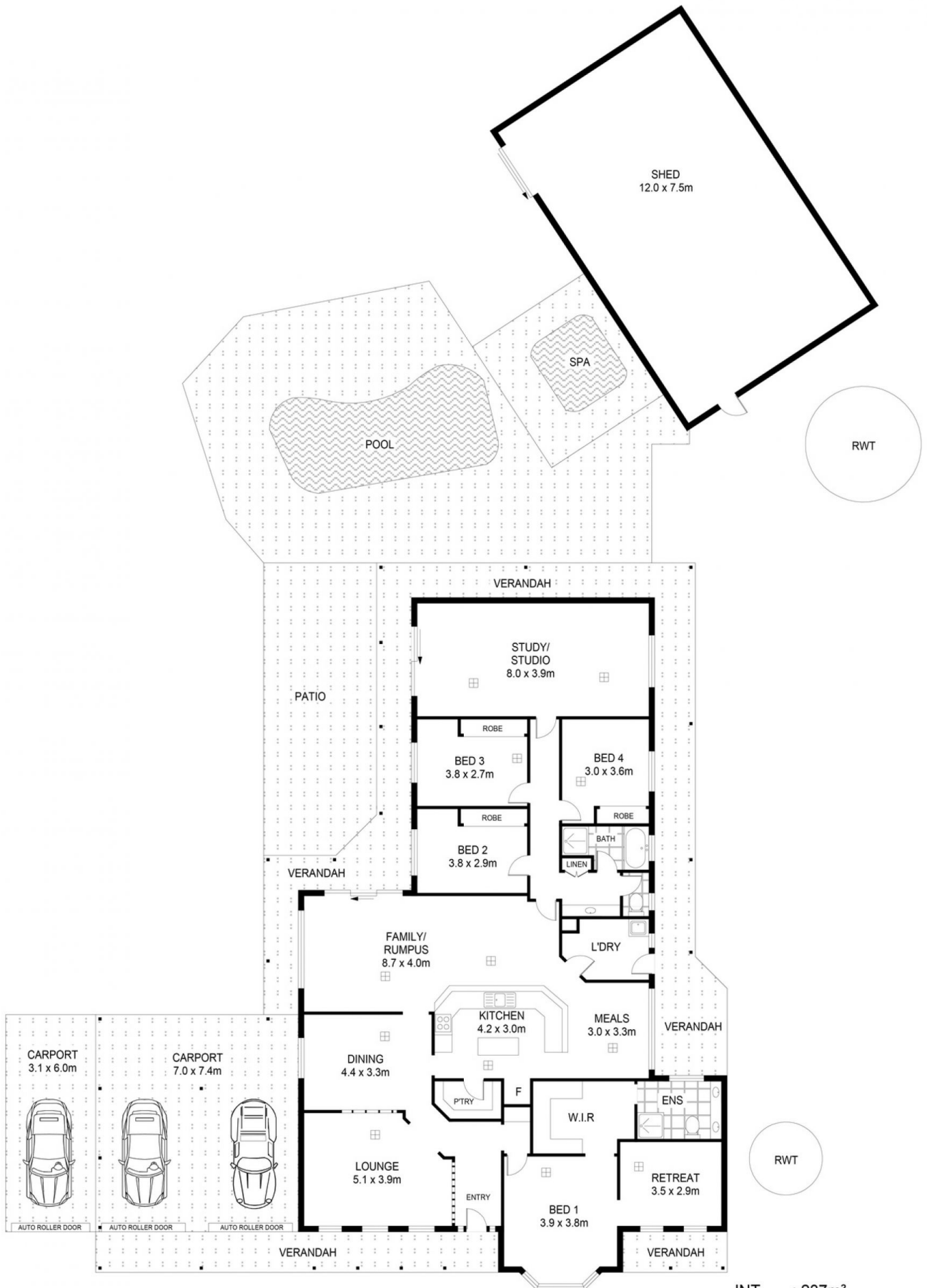
Perfect for entertaining and enjoying the outdoors, the property features a large patio, an inground 8m pool with solar heating and a luxurious Caldera Therapeutic Spa enclosed in its own spa house and to enjoy a glass of wine.

**Price** : UNDER CONTRACT

**View** : <https://www.martinrealestate.com.au/sale/sa/north-north-east-suburbs/greenwith/residential/house/7965374>



**Colin Martin**  
08 8361 7111



Scale in metres. Indicative only. Dimensions are approximate. All information contained herein is gathered from sources we believe to be reliable. However we cannot guarantee its accuracy and interested persons should rely on their own enquiries

INT : 237m<sup>2</sup>  
 SHED : 90m<sup>2</sup>  
 EXT : 203m<sup>2</sup>

15 Oradala Court, Greenwith