

1006/15 Synagogue Place Adelaide SA

2  1 

Modern urban living with this sleek two-bedroom apartment located in the bustling East End of Adelaide. Conveniently located and surrounded by the city's finest dining, shopping, entertainment offerings and public transport.

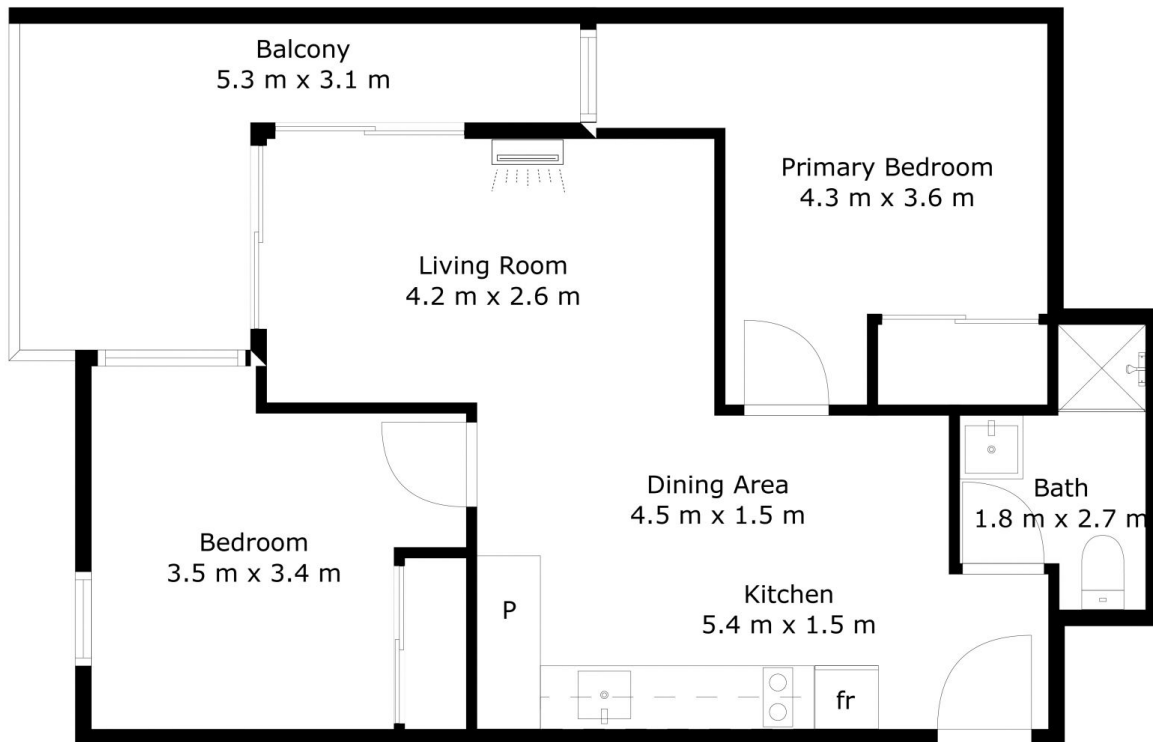
The apartment has a spacious open-plan living and dining area. North and south-facing balconies. The apartment boasts two large bedrooms, each with built-in robes and the contemporary kitchen provides abundant storage.

Enjoy shared amenities including a common kitchen, lounge, games room, and laundry facilities. Educational excellence is also within reach as the apartment resides within the zones for both Adelaide Botanic High School and Adelaide High School.

Price : \$620 pw
View : <https://www.martinrealestate.com.au/lease/sa/adelaide/adelaide/residential/apartment/7982692>



Colin Martin
08 8361 7111



7m²	60m²	10m²
TOTAL	Living	Balcony

Whilst every attempt has been made to ensure the accuracy of the floor plan contained here, measurements of doors, windows, rooms and any other items are approximate and no responsibility is taken for any error, omission, or misstatement. This plan is for illustrative purposes only and should be used as such by any prospective purchaser.