



**14/39 Crighton Avenue Royal Park SA**

2  1  1 

Located in the heart of one of Adelaide's vibrant, newly redeveloped areas, this sleek modern apartment on the first floor has a firm tenancy with a current lease until June 2025.

They are keen to stay on indefinitely and are excellent tenants. The place is always immaculate because they see it as their long term residence.

This means that you will not need to worry about looking for new tenants, they are already there! They look after the place meticulously and they always pay on time.

A healthy return of \$525 per week, this offers a great investment opportunity to the discerning buyer.

This is a low-maintenance home, designed for spacious and comfortable living.

Moments from West Lakes shopping centre, golf clubs, and

**Type** : Apartment

**Price** : \$ 500,000

**View** : <https://www.martinrealestate.com.au/sale/sa/western-beachside-suburbs/royal-park/residential/apartment/8033901>

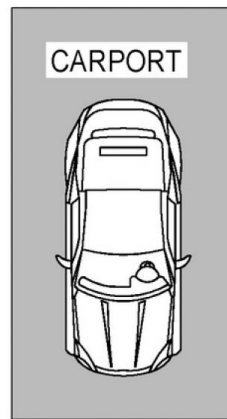
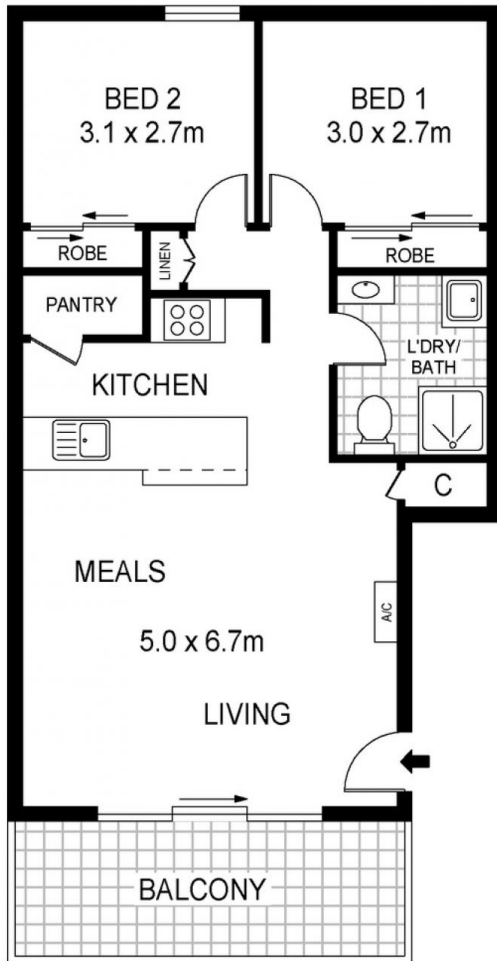


**Colin Martin**  
08 8361 7111



**Ann Preston Flint**  
08 8361 7111

[For full version visit the website](https://www.martinrealestate.com.au)



Scale in metres. Indicative only. Dimensions are approximate. All information contained herein is gathered from sources we believe to be reliable. However we cannot guarantee its accuracy and interested persons should rely on their own enquiries

INT : 60m<sup>2</sup>

14/39 Crighton Avenue, Royal Park