



460 Womma West Road Penfield Gardens SA

6  3  20 

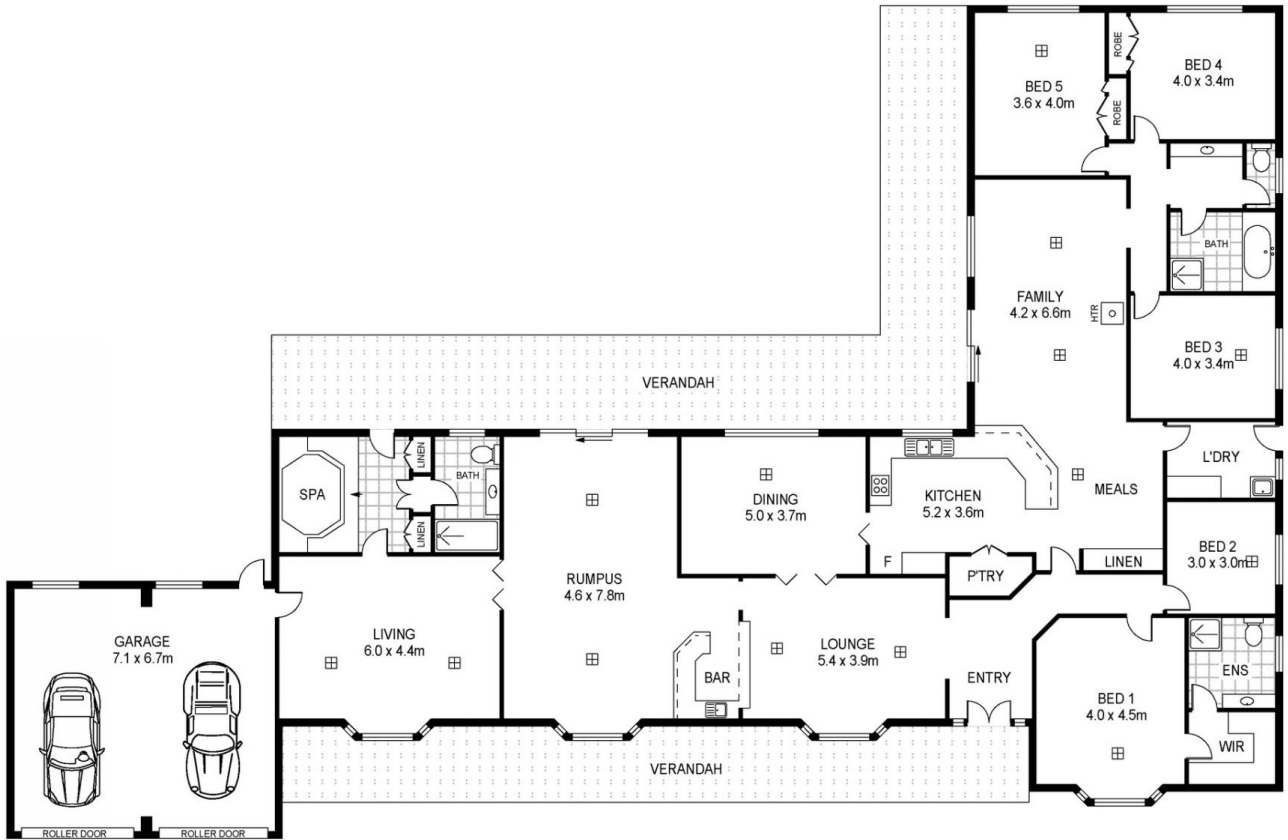
Whether you are looking for flexibility or adaptable land opportunities look no further than 460 Womma West Road, Penfield Gardens.

Perhaps you are planning to set up or wish to expand your farming or market garden business, this house and land offers multi-purpose uses with 60 hot houses and a great access.

A six bedroom home with 5.44Ha (approx) of prime land together with a 10meg water licence, plus 2 dams plus irrigation and shedding infrastructure is a rare opportunity in the developing and high demand location of Penfield Gardens.

Type : Rural
Price : UNDER CONTRACT
Building Size : 432 sqm
Land Size : 5.44 ha
View : <https://www.martinrealestate.com.au/sale/sa/north-north-east-suburbs/penfield-gardens/residential/rural/8209505>

[For full version visit the website](https://www.martinrealestate.com.au)



Scale in metres indicative only. Dimensions are approximate. All information contained herein is gathered from sources we believe to be reliable. However we cannot guarantee its accuracy and interested persons should rely on their own enquiries

INT : 341m²
 GARAGE : 48m²
 VERANDAH : 114m²

460 Womma West Road, Penfield Gardens