





**5 Victoria Court Mawson Lakes SA**

4  3  6 

Perfectly positioned on one of the first blocks sold in Mawson Lakes, this impressive executive residence enjoys a tranquil setting directly opposite the creek and reserve - offering an exceptional lifestyle opportunity for families seeking space, comfort, and prestige.

Set on a generous 700sqm (approx.) allotment - larger than the typical Mawson Lakes block - this beautifully presented two-storey home combines practicality with elegance. Attractive, established landscaping frames the property, while extensive off-street parking accommodates up to six vehicles.

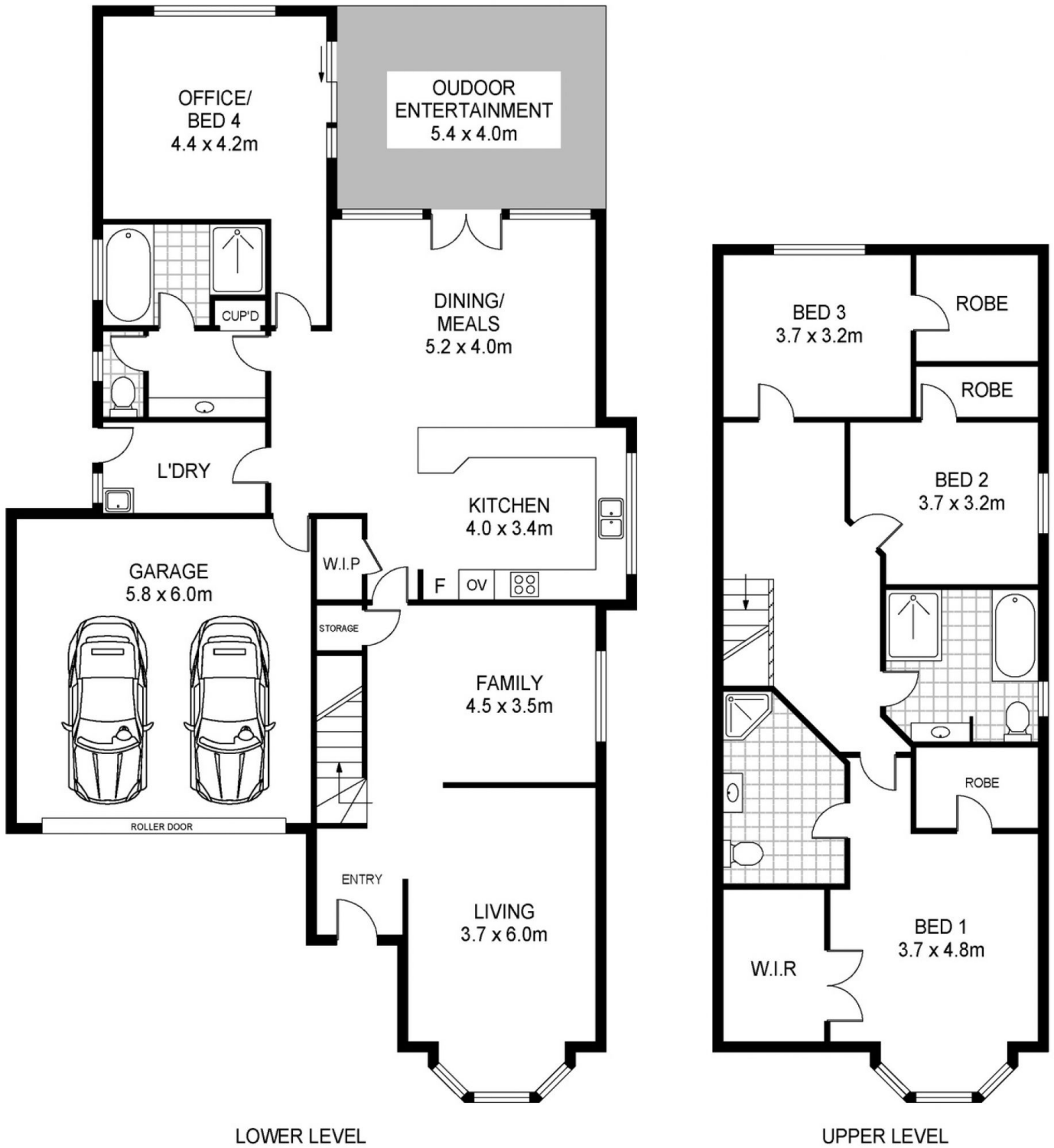
A magnificent gum tree provides natural shade, together with the duet shades/blinds and a practical floor plan

[For full version visit the website](https://www.martinrealestate.com.au/sale/sa/north-north-east-suburbs/mawson-lakes/residential/house/8626690)

**Type** : House  
**Price** : \$ 1,570,000  
**Building Size** : 254 sqm  
**Land Size** : 700 sqm  
**View** : <https://www.martinrealestate.com.au/sale/sa/north-north-east-suburbs/mawson-lakes/residential/house/8626690>



**Colin Martin**  
 08 8261 7111



## 5 Victoria Court, Mawson Lakes